



# Discover **Thainess**

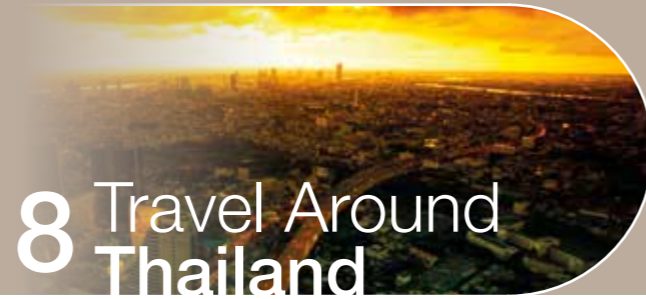
Thailand is considered to be one of the world's dream destinations. This is due to its spectacular scenery, the generosity and friendliness of the Thai people, along with its charming culture and unique way of life upheld from the past to the present. These are some of the first impressions that tourists can feel as soon as they step into this country.

Come experience the richness of Thai tradition and explore the aesthetic beauty of Thainess you have never seen, then you will fall in love with our country.

# Contents



Visit Thailand **4**



**8** Travel Around Thailand



Gateway to Thailand **12**



**18** Thailand Weather

## Festival and Culture

Discover Thainess Parade	22
The Golden Kinship Celebration	22
Chinese New Year Festival	22
Trang Underwater Wedding Ceremony	24
Wedding Registration on Elephants	25
International Kite Festival	26
Pattaya International Music Festival	26
World Wai Khru Muay Thai Ceremony	27
ASEAN Barred Ground Dove Festival	28
Songkran Festival	29
Thailand Music Festival	32
Yasothon Bun Bangfai Festival	32
Bun Luang and Phi Ta Khon Festival	33
Amazing Thailand Grand Sale	34
Folk Music Festival	34
Ubon Ratchathani Candle Festival	35
Queen of Silk Festival	36
Thailand International Food Festival	37
Phuket Vegetarian Festival	38
Nakhon Phanom Illuminated Boat Procession	39
Surin Elephant Round-Up	40
Loi Krathong Festival	41
Ayutthaya World Heritage and Red Cross Fair	44
Happiness Festival	44
Thailand New Year Countdown Celebration	45

Pattaya Women's Open	48
Honda LPGA Thailand 2015	49
Top of the Gulf Regatta International	50
Thailand Bike Fest	50
Laguna Phuket Triathlon	51
Jet Ski King's Cup–World Cup Grand Prix	51

The 12 <sup>th</sup> Khon Kaen International Marathon	54
The 10 <sup>th</sup> Laguna Phuket International Marathon	55
The 24 <sup>th</sup> Pattaya Marathon	56
The 18 <sup>th</sup> Amari Watergate & BMW Thailand Charity Midnight Run	56
The 28 <sup>th</sup> Standard Chartered Bangkok Marathon	57
The 10 <sup>th</sup> Chiang Mai Marathon	57

## Sport

## Marathon

**58** TAT'S OVERSEAS OFFICES

# Visit Thailand

## Kingdom of Thailand



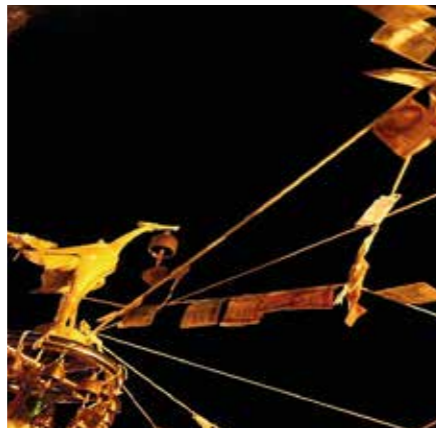
Flag



Emblem



<b>Capital</b>	Bangkok
<b>Official language</b>	Thai
<b>Ethnic groups</b>	75% Thai 14% Thai Chinese 11% Other
<b>Government</b>	Unitary parliamentary constitutional monarchy
<b>Area</b>	Total 513,120 km <sup>2</sup> (51 <sup>st</sup> ) 198,115 sq mi
<b>Population</b>	2013 estimate 64,456,695
<b>Currency</b>	Baht (THB)



**Thailand**, officially known as the Kingdom of Thailand, and formerly known as Siam, is a country located at the center of the Indochina peninsula in Southeast Asia. It is bordered to the north by Myanmar and Laos, to the east by Laos and Cambodia, to the south by the Gulf of Thailand and Malaysia, and to the west by the Andaman Sea and the south of Myanmar.

Thailand is the world's 51<sup>st</sup>-largest country in terms of total area, with an area of approximately 513,000 km<sup>2</sup> (198,000 sq miles), and is the 20<sup>th</sup> most populous country, with about 66.7 million people. The country is divided into 77 provinces, each province is divided into districts and the districts are further divided into sub-districts. The capital and largest city is Bangkok, which is Thailand's political, commercial, industrial and cultural hub. About 75 % of the population is ethnically Thai, 14 % is of Chinese origin, and 3% is ethnically Malay. The country's official language is Thai. The primary religion is Buddhism accounting to around 95% of the population.

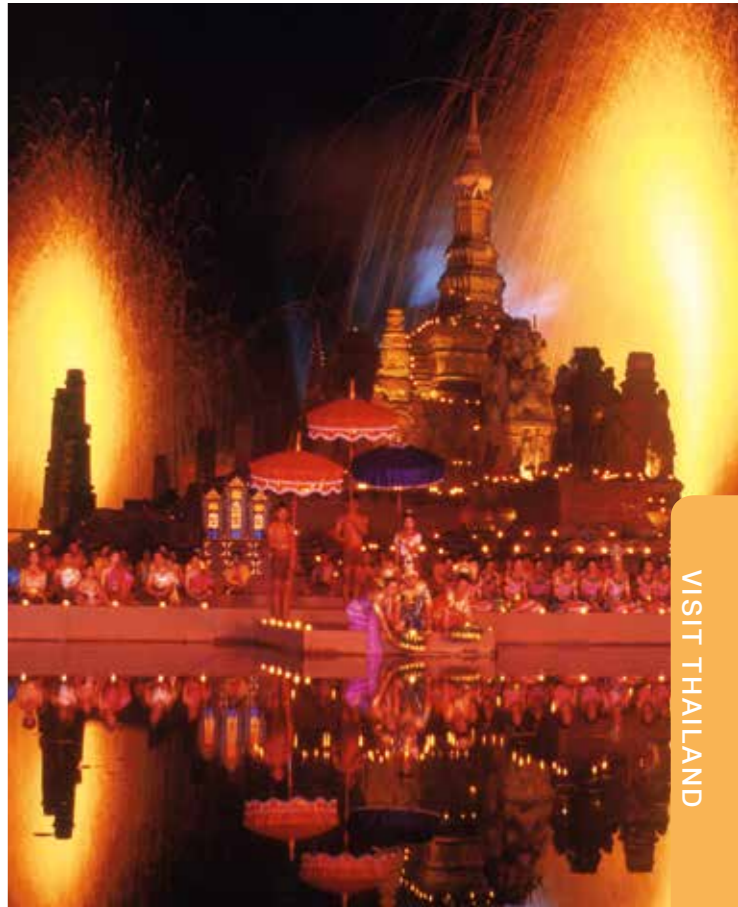


Thailand is a constitutional monarchy, headed by King Rama IX, the ninth king of the House of Chakri, who is the world's longest-serving head of state and the longest-reigning monarch in Thai history. He is titled Head of State, Head of the Armed Forces, the Upholder of the Buddhist religion, and the Defender of all Faiths.



Thailand is an emerging economy and considered as a newly industrialized country. It exports an increasing value of over \$105 billion worth of goods and services annually. The major exports include Thai rice, textiles and footwear, fishery products, rubber, jewellery, cars, computers and electrical appliances. Thailand is the world's no.1 exporter of rice, by exporting more than 6.5 million tons of milled rice annually. Substantial industries include electric appliances, components, computer parts and cars.

Thailand's education is provided by a well-organized school system of kindergartens, primary, lower secondary and upper secondary schools, numerous vocational colleges, and universities. Thai culture has been shaped by many influences, including Indian, Lao, Myanma, Cambodian, and Chinese. Thailand's national religion is Theravada Buddhism, which is important to modern Thai identity. Thai Buddhism has evolved over time to include many regional beliefs originating from Hinduism, animism as well as ancestor worship. Like most Asian cultures, respect towards ancestors is an essential part of Thai spiritual practice. Thai people do have not only a strong sense of hospitality and generosity, but also a strong sense of social hierarchy. Additionally, seniority is an important concept in Thai culture.



# Travel Around Thailand



## Central Region

The "heartland", Central Thailand, is a natural self-contained basin often called "**the rice bowl of Asia**". It is a land of civilization originating from the pre-historic era and had been developing continuously until Ayutthaya and Ratanakosin periods. As being the country's most fertile land on rice growing, the central region is also famous for its attractive places, which are full of natural resources and ancient remains. Events and festivals in this region vary depending on each geographical area and culture of each community. Visitors to the central region will learn the local ways of life including their customs and traditions that reflects through many interesting festivals and events.



## Northern Region

Surrounded by the tallest mountains in Thailand, the northern region is cooler than the rest of the country and particularly popular in November until February. In the mountains at night, temperatures occasionally dip below freezing point, even in the plains, daily average is rarely less than 25 Centigrade. Culturally, Northern Thailand shows heavy influences from neighboring cultures of Myanmar and Yunnan (China). The Kingdoms of Lanna (centered in Chiang Mai) and Sukhothai were the first historical Thai nations so there are a lot of Lanna cultures and festivals which northern people continually behave until today. The yearly important festivals and events are Loi Krathong Festival or Yi Peng and Songkran Festival which is the New Year Day for northern people.



## Southern Region

The southern region is covered with tropical dense rainforests. However, the natural attraction that brings fame to the southern region is the abundant beaches and islands scattering all throughout the region. There are two rainy seasons in the south. May to September is the southwest monsoon period, which brings heavy rains to the west coast of the region. On the other hand, November to February is the northeast monsoon period bringing heavy rains to the east coast. Therefore, most festivals and events focus on beach and sea activities like water sports. However, there are also unique traditional cultures. Some festivals and cultures harmonize among Thais, Muslims and Chinese. Religion significantly affects the regional cultures and the way of life of southern people.



## Northeastern Region

The northeastern region occupies the largest land area in Thailand. The region is commonly referred to as I-san, which usually conjures up the image of an arid land area. It is one of the most traditional areas of the country and a land based on agriculture and cottage industries. The area can be one of the most wonderful destinations, especially for enthusiast of pre-historic human civilization because the region boasts several significant ancient Khmer temples. The people of I-san have a distinctive character and culture, developed largely from their style of living. Their ancient cultures and traditions are still reflected in many festivals which are unique to the northeasterners. The people in I-san celebrate a number of traditional festivals such as Songkran Festival and Loi Krathong Festival of Lights. These are the main tools to attract more tourists.



## Eastern Region

The charm of the eastern region is the fine coastal beaches, with highly famous beaches including Pattaya in Chonburi, Ko Samed in Rayong, and Ko Chang in Trad. The area is among the most complete seaside destinations in Thailand. Apart from beaches, the area also consists of waterfalls, mountains and islands. Agricultural tourism is very popular in some eastern provinces such as Chanthaburi, Rayong and Trad, where farming of durians, rambutans and mangosteens become very popular. Therefore, the festivals and events in eastern region are mostly beach and sea activities like water sports and music events on the beach. Also, fruit festivals are very famous in this region.



# Gateway to Thailand

Thailand is the major gateway to Asia and the center of businesses and tourism which attracts a number of foreigners around the world each year. It is also the popular hub that most travelers stop before continuing their journey to other neighboring countries. So, nowadays, air transportation plays very important role in tourism of Thailand.

Since the second World War, air transportation of Thailand has been developed rapidly. At present, there are thousands of flights per week all over the world from and to Suvarnabhumi International Airport, which is the largest first-class international airport with international standard services in Thailand. So, it becomes one of the most important aviation hub of Asia. Moreover, Thailand provides several other international airports throughout the country which can support both domestic and international flights such as Don Mueang International Airport, Chiang Mai International Airport, Phuket International Airport, Udon Thani International Airport, etc.

## Major International Airports in Thailand

### Suvarnabhumi International Airport

999 Moo 1 Bangna-Trad Road Km. 15  
Rachathewa, Bang Phli Samut Prakan 10540  
Tel. +66 2723 0000, +66 2132 1888,  
+66 2132 1111-2  
website : [www.suvarnabhumiairport.com](http://www.suvarnabhumiairport.com),  
[www.airportthai.co.th](http://www.airportthai.co.th)



### Don Mueang International Airport

222 Vibhavadi Rangsit Road,  
Sanambin Don Mueang, Bangkok 10210  
Tel. +66 2535 1111 +66 2535 1254  
Website : [www.airportthai.co.th](http://www.airportthai.co.th)

### Chiang Mai International Airport

60 Mahidol Road, Sutep Subdistrict,  
Muang District, Chiang Mai Province 50200  
Tel. +66 5327 0222-33, +66 5320 3300-19,  
+66 5392 2274  
Website : [www.airportthai.co.th](http://www.airportthai.co.th)





**Mae Fah Luang-Chiang Rai International Airport**  
 404 Moo 4, Ban Du-Rim Kok Subdistrict, Muang Chiang Rai District, Chiang Rai Province 57000  
 Tel. +66 5379 8000 +66 5379 3071, +66 5379 8171  
 Website : [www.airportthai.co.th](http://www.airportthai.co.th)

**Krabi International Airport**  
 133 Moo 5, Nua Klong Subdistrict, Nua Klong District, Krabi Province  
 Tel. +66 7563 6541  
 website : [www.krabiairport.org](http://www.krabiairport.org)



**Phuket International Airport**  
 222 Mai Kwaw Subdistrict, Talang District, Phuket Province 83110  
 Tel. +66 7632 7230-7, +66 7635 1166  
 Website : [www.airportthai.co.th](http://www.airportthai.co.th)



**Udon Thani International Airport**  
 Chiang Phin, Muang Udon Thani, Udon Thani Province 41000  
 Tel. +66 4224 4426, +66 4224 6804  
 Website : [www.udonthaniairport.com](http://www.udonthaniairport.com)



**Hat Yai International Airport**  
 99 Moo 3, Klong Luang Subdistrict, Klong Hoi Kong District, Songkla Province 90115  
 Tel. +66 7422 7107, +66 7422 7000, +66 7422 7131-3  
 Website : [www.airportthai.co.th](http://www.airportthai.co.th)

**Ubon Ratchathani International Airport**  
 297 Thep Yotee Road, Nai-Mueang Subdistrict, Mueang Ubon Ratchathani District, Ubon Ratchathani Province 34000  
 Tel. +66 4524 5612-4







### Buriram Airport

143 moo 12, Ron Thong Subdistrict,  
Satuek District,  
Buriram Province 31000  
Tel. +66 4468 0078

## Major Airlines in Thailand

### Thai Airways International Public Company Limited

89 Vibhavadi Rangsit Road, Bangkok 10900 Tel. +66 2545 1000 **Call Center 1566**  
www.thaiairways.com



### Thai Smile Airways Company Limited

89 Vibhavadi Rangsit Road, Bangkok 10900 Tel. +66 2308 8383 www.thaismileairways.net

**Kan Airlines** 100/519 Moo 2, Chaeng-Wattana Rd., Thungsonghong, Laksi, Bangkok 10210  
Tel. +66 2551 6111 www.kanairlines.com



**Jet Asia Airways** Level 29, The Offices at Centralworld 999/9 Rama I Road, Pathumwan  
Bangkok 10330 Tel. +66 2207 2543 www.flyjetasia.com

**City Airways** 184/6, 10<sup>th</sup> Floor, Forum Tower, Ratchadaphisek Rd., Huai Khwang,  
Huai Khwang, Bangkok 10310 Tel. +66 2645 3288 www.cityairways.co.th/



**Air Asia** 99 OSC Building, King Kaew Road, Rachathewa, Bangplee, Samutprakarn 10540  
Tel. +66 2515 9999, +66 2315 9800 www.airasia.com

**Solar Air** 222 Room 3251 Don Muang Airport Moo10 Viphavadi-Rangsit Rd, Sanambin,  
Don Muang, Bangkok 10210 Tel. +66 2535 2448-9 www.solarair.co.th



**Nok Air** 17 Fl. Rajanakarn Building 183 South Sathorn Road, Yannawa, Sathorn,  
Bangkok 10120 Tel. +66 2627 2000 **Call Center 1318** www.nokair.com

**Nok Mini Air (SGA)** 19/18-19 Royal City Avenue Block A Rama 9 Road Kwang Bangkokapi  
Huay Kwang, Bangkok 10310 Tel. +66 2664 6099, +66 2641 4190 www.nokmini.com



**Orient Thai Airlines (1-2-go)** 18 Ratchadapisek Road, Klongtoey, Bangkok 10110  
Tel.+66 2229 4260 **Call Center 1126** www.flyorientthai.com/th/home

**Bangkok Airways** 99 Mu 14, Vibhavadirangsit Rd., Chom Phon, Chatuchak, Bangkok 10900  
Tel. +66 2265 5678, +66 2270 6699 **Call Center 1771** www.bangkokair.com



**Thai Lion Air** Room 4313A, 4 th floor, Terminal 1 Building, Don Mueang International Airport  
222 Vibhavadi Rangsit Road, Sanambin Sub-District, Don Mueang District,  
Bangkok 10210 Tel. +66 2529 9999 www.lionairthai.com

## Bus Terminal in Thailand

### Bangkok Bus Terminal (Ekkamai)

Sukhumvit Road, Phra Khanong, Khlong Toey, Khlong Toei, Bangkok 10110  
Tel. +66 2391 8097, +66 2391 6846

**Route : Eastern Part of Thailand**

### Bangkok Bus Terminal (Chatuchak)

Kamphaeng Phet 2 Road, Chatuchak, Bangkok 10900  
Tel. +66 2936 2852, +66 2936 2841

**Route : Northern, Northeastern and Central Part of Thailand**

### Bangkok Bus Terminal (South)

Boromratchachonnani Road. (Phutthamonthon Sai 1), Taling Chan, Bangkok 10170  
Tel. +66 2894 6122, +66 2422 4444

**Route : Southern Part of Thailand**



# Thailand Weather

*Thailand can be described as tropical wet and dry or savanna climate for the majority of the country during most of the year effected by an annual monsoon, which are consistent wind patterns that change at different times of the year due to the differences between land and sea temperatures and pressures, with a rainy season from June to October and a dry season the rest of the year. The countrywide temperatures normally range from an average annual high of 38 °C (100.4 °F) to a low of 19 °C (66.2 °F), with the highest temperatures from March to May and the lowest in December and January.*

*The northern and central areas of Thailand have a climate determined by three seasons while the southern peninsular region of Thailand has only two. Thailand climate can be divided into three main seasons; the hot season (March to May), the rainy season (June to October) and the cool season (November to February).*

## Hot Season (March to May)

The country is the hottest between the months of March and May and the heat is really scorching. During the hot season, the temperature rises dramatically in the second half of March, then climbs over 40 °C (105 °F) in some areas by the middle of April when the Sun passes the Zenith, and at night the humidity rises.



## Rainy Season (June to October)

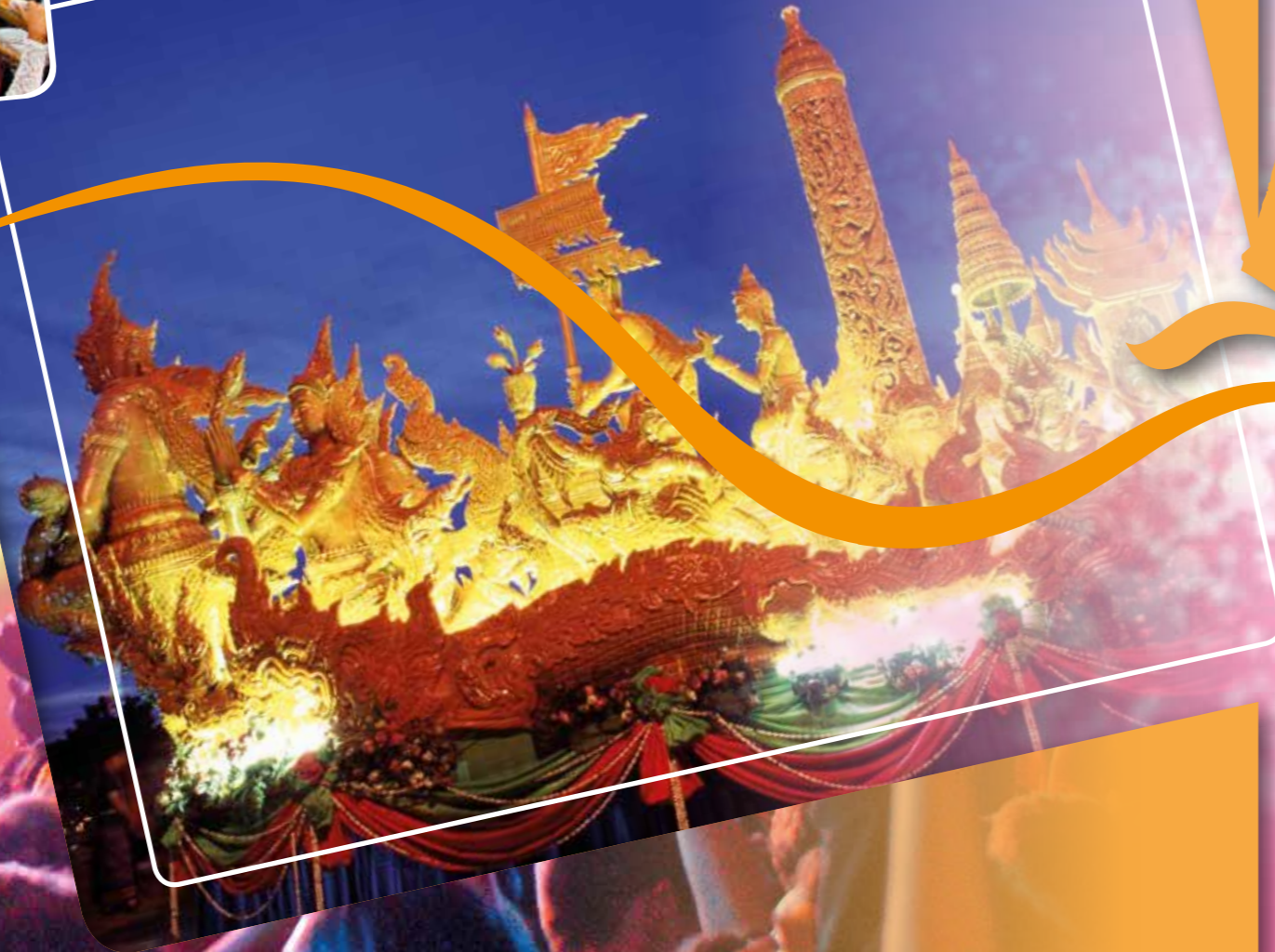
Southwest monsoons that arrive between May and July (except in the South) signal the coming of the rainy season, which lasts into October and the cloud covering reduces the temperature again but the high humidity is experienced as 'hot and sticky'. The mornings are usually sunny, but the thunderstorms can come towards the late afternoon or at night. This usually starts in late July or August, but by September there is a thunderstorm on most days, often resulting in flooded streets but cooler nighttime temperatures.



## Cool Season (November to February)

November and December mark the onset of the cooling season and night temperatures on high ground can occasionally drop to a light frost. Winds are predominantly from the north when this season starts. Every day is a sunny day. The ground will still be saturated in many places in November due to the previous rainy season. The climate is much less trying with a cooling North East breeze and a reduction in the humidity level. Temperatures begin to climb again in late January, and a hot sun parches the landscape.





Festival and  
Culture



### Discover Thainess Parade

**Date** : 14 January 2015  
**Venue** : Ratchaprasong-Lumpini Park, Bangkok

**Discover Thainess Parade** is the event that offers the story of Thainess via the traditional parade which shows the essence of 'Thainess' through the Thai way of life, Thai culture and Thai experiences. The mixture of contemporary traditions of Thai people, the variety of cultures throughout the regions of Thailand will also be shown in this parade, which reflects the unique Thai way of life.

**Contact** Event Department, TAT  
 Tel. +66 2250 5500 ext. 3485-9  
[www.tourismthailand.org](http://www.tourismthailand.org)



### The Golden Kinship Celebration

**Date** : 19 February 2015  
**Venue** : Yaowarat Road, Bangkok

**China and Thailand has forged a lasting kinship** through our shared history and descendants of Thailand. Also this month in 2015, It is a special occasion, to celebrate the 60th birthday of Her Royal Highness Princess Maha Chakri Sirindhorn. There will be various performances in this event which is the cooperation between Thailand and The People's Republic of China. Besides, there will be street-market along the Yaowarat Street as well.

### Chinese New Year Festival

**Date** : 19 February 2015  
**Venue** : Throughout Thailand

**Chinese New Year in Nakhon Sawan Province and The Chao Pho Chao Mae Pak Nam Pho Fair** : It is a festival of the Thai Chinese who live in Nakhon Sawan Province. This festival has been held since ancient times. It takes place during Chinese New Year (around the beginning of February every year) to bring good fortune. It features various processions such as lion parade, dragon parade, angel procession, the goddess Guan Yin procession and others going along the main roads in the municipality. The festival is famous among Thais and foreigners.

**Chinese New Year in Phuket Province** : There will be a parade at the beginning of this event. Inside, there will be exhibition of various local traditions such as the Sino-Portuguese Architecture. The tourists can also enjoy the bazaar where they can find various local foods and local Thai desserts.

**Chinese New Year in Suphan Buri Province** : Spectacular cultural shows from China, acrobatic performances, multimedia shows, and concerts by big name Thai artists.

**Chinese New Year in Hat Yai, Songkhla Province** : Chinese cultural performances, concerts by various Thai artists, Miss Chinese 2015 beauty contest, and a bazaar selling Chinese New Year goods.



**Contact** Event Planning Division, TAT  
 Tel. +66 2250 5500 ext. 3465-7  
[www.tourismthailand.org](http://www.tourismthailand.org)



### Trang Underwater Wedding Ceremony

**Date** : 14 February 2015  
**Venue** : Koh Kradan, Sikao district, Trang Province

The “Trang Underwater Wedding Ceremony” gained worldwide popularity and attracted so much international interest as the first place in the world where the wedding was held that the Guinness World Records has awarded this event “**The Largest Underwater Wedding Ceremony**” The event has not only equipped with the largest number of wedding couples in the world, but it also praised of anti-discrimination by facilitating handicapped couples in joining this memorable ceremony. The Trang Underwater Wedding Ceremony is widely recognised as one of the most fascinating events of Trang Province, impressed by numerous lovers giving their love to each other among the romantic atmosphere to memorise for the rest of their lives.

**Contact** Trang Chamber of Commerce  
 Tel : +66 75 225 353, +66 75 210 238  
[www.underwaterwedding.com](http://www.underwaterwedding.com)



### Wedding Registration on Elephants

**Date** : 14 February 2015  
**Venue** : Elephant Study Center, Tah Toom district, Surin Province

In Surin province, there is a famous event called “**Wedding Registration on Elephants**” which promotes the tourism and attracts tourists to come to Surin province. Annually on 14 February, the Elephant Study Centre in Surin Province holds a “Wedding on Elephant Back” ceremony. The couples getting married in this style will go through the “**sat-te**” ceremony which is the traditional wedding ceremony of the kui\* people, which is unique and full of meaning. This event is also considered to be one of the biggest weddings on the Elephant back in the world.

**Contact** TAT Surin Province. Tel.+66 4451 4447  
 E-mail:tatsurin@tat.or.th  
[www.tourismthailand.org](http://www.tourismthailand.org)





## International Kite Festival

**Date** : March 2015  
**Venue** : Petchaburi Province

There are many activities in this "International Kite Festival" to keep the participants occupied such as the shows of Fantasy kites from various countries along with the kite exhibition. There will be plenty of food and handicraft booths everywhere as well.

**Contact** Event Planning Division, TAT  
 Tel. +66 2250 5500 ext. 3472-8  
[www.tourismthailand.org](http://www.tourismthailand.org)



## Pattaya International Music Festival

**Date** : March 2015  
**Venue** : Pattaya, Chonburi Province

Pattaya International Music Festival is one of the biggest international beach music festivals in Asia and Thailand, which take place in Pattaya, Chonburi Province. This fun festival brings a lot of famous Asian and Thai artists to show on the stages near the beautiful beach. Tourists can enjoy the bazaar where they can find goods and various foods along the Pattaya beach.

**Contact** TAT Pattaya Office  
 Tel. +66 3842 7667  
[www.tourismthailand.org](http://www.tourismthailand.org)



## World Wai Khru Muay Thai Ceremony

**Date** : 17 March 2015  
**Venue** : Ayutthaya Historical Park,  
 Phra Nakhon Si Ayutthaya Province

"Muay Thai" is Thai traditional martial arts which has its own unique style that once in a life time you should come and see the "World Wai Khru Muay Thai Ceremony". This annual event is always scheduled on March, 17 at Wat Mahathat in the Ayutthaya Historical Park in the ancient capital of Ayutthaya.

Inside the event, there are various activities to observe such as the making of Aranyik swords, performance of Thai martial arts and many more. One of the most anticipating activities is the Professional Muay Thai competition between Thai and foreign boxers. Besides, the Ceremony of paying respect to masters of Muay Thai and pay homage to the late Thai great kings is also famous in this event.

**Contact** TAT Ayutthaya Office  
 Tel. +66 3524 6076-7  
[www.tourismthailand.org](http://www.tourismthailand.org)



### ASEAN Barred Ground Dove Festival

**Date** : March 2015  
**Venue** : Suan Kwan Muang, Muang District, Yala Province

The ASEAN Barred Ground Dove festival takes place to attract and make relationship among the dove-lovers from various parts of Thailand as well as from neighboring countries such as, Malaysia, Indonesia and Singapore. Tourists can also enjoy bazaar that provides various goods. The major highlights during the event are the doves with the most melodious and sweetest cooing sound competition.

**Contact** Yala Municipality  
 Tel. +66 7321 4898, +66 7321 2971  
[www.tourismthailand.org](http://www.tourismthailand.org)



### Songkran Festival

**Date** : 12-21 April 2015  
**Venue** : Throughout Thailand

**Songkran Festival in Bangkok** : The festival of being National Elderly day as well as the celebration of Thai New Year which is anticipated by both Thai people and foreign tourists from various places. There are array of activities to enjoy in this festival such as a parade that show the tradition and culture of Thai people and Khong River, cultural performances, bazaar where people can buy goods, and many more.

**Phra Nakhon Si Ayutthaya Songkran Festival** : There are many activities such as offering food to monks in front of Wihan Phra Mongkhon Bophit, releasing of birds and fish, and pouring scented water on the hands of elders to receive their blessing. Enjoy water splashing with elephants inside the Historical Park.

**Wan Lai Songkran Festival in Bangsaen, Chonburi Province** : Besides water splashing, there are various other activities such as Sand pagoda making, local games and sports as well as goods and local products (OTOP) can be found in a bazaar. Tourists can enjoy the night with music performances from many famous artists.

**Songkran Festival in Khon Kaen Province** : There are various events in this festival such as a parade of Flora Cart, Songkran beauty pageant, and other kind of entertainments in Khao Niew Road, the main venue of Khon Kaen Songkran Festival. OTOP products from local people can also be found in this event.



**Prapradaeng Songkran Festival, Samutprakarn Province** : This traditional Songkran festival in Prapradaeng was inherited from the Raman culture which is famous among local people and foreign tourists. There are many parades such as a parade of the Songkran Pageant, Flower parades and the Raman villagers that dress up in the Thai Raman Style, including Raman musical performance as well.

**Midnight Songkran in Songkhla Province** : Besides watering activities, there are activities such as colorful parade of Midnight Songkran, a big foam party as well as Miss Songkran beauty pageant contest. The event lasts all night long.

**'Song Nam Oay Tan' Songkran Festival in Sukhothai Province** : There will be a ceremony to pay respects to Phraya Li Thai, the founder of Sukhothai Kingdom, along with Miss Songkran beauty pageant and also cultural parade of Si Satchanalai. Tourists can enjoy various foods from international food festival as well.

**Songkran on the beach in Phuket Province** : There will be a ceremony for young individuals to pay respect to elders as well as various cultural performances. Besides water splashing, there is also the competition of little Miss Songkran beauty pageant.

**'Pi Mai Muang' Songkran Festival in Chiang Mai Province** : There are various activities such as procession and bathing of Phra Buddha Sihing, a parade of local Lanna women riding a Kang Chong (a Northern vehicle), building sand pagodas, local arts and cultural shows and many more.



**Songkran Thai – Lao in Nakhon Phanom Province** : In this festival, both Thai and Laos people will come together to make merit by offering good to monks. Another religious tradition is the worshipping of different Buddha's relics according to each individual birthday. There are many more activities along the Khao poon street as well.

**Songkran 'Nang Dan' Parade in Nakhon Si Thammarat province** : Tourists can enjoy the 'Nang Dan' Parade ceremony which is influenced by Hindu religious rituals, as well as bathing of Phra Buddha Sihing along with various local performances.

**Songkran Festival in Suphan Buri Province** : There are parades from various districts in Suphan Buri Province as well as the procession of a golden 'Luangpho To' which is Suphan Buri's divine religious figure. Tourists can enjoy the concert from various famous artists in Thailand while absorbing conventional arts and culture with award-winning performances from local students.

**Songkran in Sangkhlaburi, Kanchanaburi Province** : The highlight in this festival is where local people will carry food to offer to monks along with the ceremony of bathing the Emerald Buddha statue. There are also various local performances. Tourists can also watch a Buddha statue purifying ceremony through bamboo pipes, watch the monks walk on people's back parade.

Contact

Event Planning Division, TAT  
Tel. +66 2250 5500 ext. 3470-2  
[www.tourismthailand.org](http://www.tourismthailand.org)







## Thailand Music Festival

**Date** : May 2015  
**Venue** : Petchaburi Province

This Music Festival in Petchaburi will bring many famous Thai and international artists to entertain their fans in this free-concert festival. There are other activities in this festival such as selling local food and drink, and photo session exhibition.

**Contact** Event Planning Division, TAT  
 Tel. +66 2250 5500 ext. 3470-2  
 www.tourismthailand .org



## Yasothon Bun Bangfai Festival

**Date** : May 2015  
**Venue** : Phaya Tan Park, Muang District, Yasothon Province

Bun Bangfai is a merit-making ceremony traditionally practiced by people throughout much of northeast Thailand. It is a belief that near the beginning of the rainy season, local people will fire various home-made rockets to the sky to worship the god which he would bless them with plentiful rain for rice cultivation. In this Bangfai Festival, there are various activities such as the processions of Bangfai, the Bangfai making and other cultural performances.

**Contact** TAT Yasothon office  
 Tel : +66 4525 0714  
 www.tourismthailand .org



## Bun Luang and Phi Ta Khon Festival

**Date** : June 2015  
**Venue** : Dan Sai district, Loei Province

The Phi Ta Khon Festival is part of Buddhist merit-making holiday called 'Bun Luang' or 'Boon Prawat'. This year's festival will take place in July in Dan Sai district of Loei Province. It is a belief that this annual Bun Luang festival is related to the thirteen sermons of Prince Vessandorn where local people will gather at the temple to listen to the sermons recited by the monks. There are also various activities such as the parade of people who dance and strike poses while wearing huge masks made from carved coconut-tree trunks, topped with wicker work and sticky-rice steamers, various performances from local people along with bazaar where OTOP goods can be found.

**Contact** TAT Loei Office  
 Tel. +66 4281 2812  
 www.tourismthailand .org





**AMAZING THAILAND GRAND SALE**  
15 JUNE-15 AUGUST 2015



## Amazing Thailand Grand Sale

**Date** : 15 June–15 August 2015  
**Venue** : Throughout Thailand

Tourism Authority of Thailand, in a cooperation with other tourism industries such as shopping malls, airlines, hotels, tour companies, duty-free shops, luxurious shops, golf clubs and spas will hold this famous event where shoppers can secure the best deals for different goods and services. This event also attracts target tourists from Malaysia, Singapore, Hongkong, Vietnam, Japan, South Korea, Taiwan, Russia, and United Arab Emirates to travel and buy products from Thailand during this off-peak tourist season. There are many special campaigns for tourists to choose during this event. It is a great time for everybody that seeks to find the best deals in Thailand.

**Contact** Tourism Investment Department, TAT  
Tel. +66 2250 5500 ext. 2951  
[www.tourismthailand.org](http://www.tourismthailand.org)

## Folk Music Festival

**Date** : July 2015  
**Venue** : Muang District, Chiang Mai Province

This multi-cultural festival shows the diversity of cultures among the ASEAN community through the perspective of culture, arts, performances and exhibitions. This festival aims to show the unity of people in South East Asia region.

**Contact** Event Promotion Division, TAT  
Tel. +66 2250 5500 ext. 3485-9  
[www.tourismthailand.org](http://www.tourismthailand.org)



## Ubon Ratchathani Candle Festival

**Date** : July 2015  
**Venue** : Muang District, Ubon Ratchathani Province

The Candle Festival in Ubon Ratchathani Province is considered to be one of the biggest merit festivals of this Province which will be held in Asalha Puja or Dharma Day and in the beginning of Buddhist lent every year. There will be the procession of carved candles in various shapes along the road from Sri Ubon Rattanaram temple to Thung Si Muang temple. The festival also includes a light and sound presentation, cultural shows, and displays of local artisans' handcrafting and sculptures.

**Contact** Ubon Ratchathani Provincial Office  
Tel +66 4525 4827  
TAT Ubon Ratchathani Office  
Tel. +66 4524 3770  
[www.tourismthailand.org](http://www.tourismthailand.org)



### Queen of Silk Festival

**Date** : August 2015  
**Venue** : Bangkok

The fair is meant to pay tribute to Her Majesty the Queen, who has played a vital role in developing Thai silk and making it known throughout the world. This fair will display the textile manufacturing in the local communities along with the fashion show under the theme of Thai Silk Fashion Week featuring various famous Thai and international designers.

**Contact** Event Promotion Division, TAT  
 Tel. +66 2250 5500 ext. 3485-9  
 www.tourismthailand .org



### Thailand International Food Festival

**Date** : September 2015  
**Venue** : Phuket Province

This event will take place at the beach of Phuket, also known as the famous Andaman Pearl which will be featuring an array of foods in this International Food Festival. There are many activities such as the best chef competition, the bazaar where many famous foods from various restaurants can be found along with other entertainment activities.

**Contact** Event Planning Division, TAT  
 Tel. +66 2250 5500 ext. 3470-2  
 www.tourismthailand .org



### Phuket Vegetarian Festival

**Date** : October 2015  
**Venue** : Phuket Province

The Phuket Vegetarian Festival is an annual event held during the ninth lunar month of the Chinese calendar which lasts for 9 days. During this time, local residents of Chinese ancestry strictly observe a 10-day vegetarian or vegan diet for the purposes of spiritual cleansing and merit-making. It is believed that the vegetarian festival and its accompanying sacred rituals bestow good fortune upon those who religiously observe this rite. There will be a ritual procession featuring sacred rituals such as walking barefooted over hot coals and ascending ladders with bladed rungs are performed by entranced devotees known as "Ma Song".

**Contact** TAT Phuket Office  
 Tel. +66 7621 2213  
 www.tourismthailand .org

### Nakhon Phanom Illuminated Boat Procession

**Date** : October 2015  
**Venue** : Muang District, Nakhon Phanom Province

The illuminated boat procession or 'Lai Ruea Fai' event is a tradition related to the legend about the end of Buddhist Lent which the Lord Buddha spent the entire period of Buddhist Lent in Heaven and returned to Earth at the end. To pay respect and welcome the Lord Buddha, Ruea Fai or fire boats decorated with flowers, incense sticks, candles, and lanterns are launched on the Mekong River in the evening. It is also believed that this ceremony will bring sadness and bad things in life away with the river. There will be the boats which are impressively constructed and decorated along the Khong River.

**Contact** Nakhon Phanom Provincial Office  
 Tel. +66 4251 1287, +66 4251 1576  
 TAT Nakhon Phanom Office  
 Tel. +66 4251 3490-2  
 www.tourismthailand .org





## Surin Elephant Round-Up

**Date** : November 2015

**Venue** : Surin Elephant Performance Ground and Si Narong Stadium, Muang District, Surin Province

Surin Province is well-known for its domestic elephant village where it holds 'Surin Elephant Round-Up' every year to show various performances by elephants. This event also promotes tourism and preserves the local way of life of a profound bond among people and elephants in this province. There are arrays of activities in this event such as a fair featuring a range of agricultural products, and a wide variety of Mueang Surin products, the exhibition, cultural performances and entertaining shows.

**Contact** TAT Surin Office  
Tel. +66 4451 4447-8  
www.tourismthailand.org



## Loi Krathong Festival

**Date** : November 2015

**Venue** : Throughout Thailand

Loi Krathong is a festival celebrated annually throughout Thailand which takes place on the evening of the full moon of the 12th month in the traditional Thai lunar calendar, or usually falls in November. It is a belief that people launch their Krathong on river, canal or pond, making a wish as they do so. The festival is also believed to be a form of ritual of paying respect to the water spirits as well as to wash away bad things in our life. This event will be celebrated throughout Thailand.

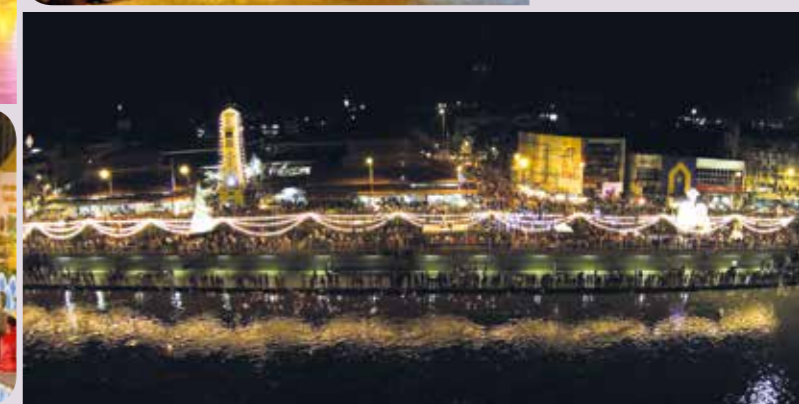
**Loi Krathong Festival in Bangkok**—In Bangkok that night, there will be various ships and boats decorated with arrays of lights throughout Chao Phraya River, fireworks are also being shot in that night. There are activities such as cultural performances, Loi Krathong exhibition as well as other entertainments related Krathong. People can launch their Krathong along the Chao Phraya River.



**Sukhothai Loi Krathong and Candle Festival, Sukhothai Province**—There are many activities in this festival such as “Greeting of the Dawn of Happiness” ceremony, Light-and-Sound Presentation at Wat Mahathat, and many other cultural performances that reflect the traditions of Sukhothai.

**Yi Peng Lantern Festival, Chiang Mai Province**—Throughout Chiang Mai, Yi Peng Lanterns are released everywhere. There are many activities such as Lanna cultural performances and Krathong parades. The city of Chiang Mai will be decorated with lanterns and fireworks are being shot throughout the sky.

**Loi Krathong Festival, Samut Songkhram Province**—Inside this festival, its Krathong will be made of leaf sheaf of banana tree which make this festival unique. There are also various other activities such as exhibition about Krathong made of leaf sheaf of banana tree along with musical performances and other entertainments.



**Loi Krathong Sai Lai Prathip Phan Duang Festival, Tak Province**—Inside this festival, there will be the procession of Krathong, along with the competition of releasing the Krathong cups called ‘Krathong Sai Lai Prathip Phan Duang’ to win His Majesty the King’s Cup. There are various cultural performances as well.

**Bang Sai Loi Krathong Tam Prathip Festival, Phra Nakhon Si Ayutthaya Province**—There are many activities in this festival such as the competition for the best Krathong along with beauty pageant and various cultural performances.

**Ratchaburi Loi Krathong Festival, Ratchaburi Province**—There are arrays of activities such as cultural performances along with bazaar that local goods can be found.

**Contact** Event Planning Division, TAT  
Tel. +66 2250 5500 ext. 3472-8  
[www.tourismthailand.org](http://www.tourismthailand.org)



## Ayutthaya World Heritage and Red Cross Fair

**Date** : December 2015  
**Venue** : Ayutthaya Historical Park,  
 Phra Nakorn Si Ayutthaya Province

There are various events such as Red Cross Fair, cultural performances, OTOP Products Fair & Local Goods Fair and a wide variety of delicious Thai dishes and local dishes are also offered in this festival. Light and sound show and the reproduced atmosphere of the Ayutthaya is the highlight of this event.

**Contact** Event Promotion Division, TAT  
 Tel. +66 2250 5500 ext. 3490-4  
[www.tourismthailand.org](http://www.tourismthailand.org)

## Happiness Festival

**Date** : December 2015  
**Venue** : Bangkok

This festival aims to honor His Majesty the King as the Supreme Artist in music as well as to celebrate His Majesty the King's birthday on 5th December. There are various activities such as musical performances and New Year celebration activities.

**Contact** Event Promotion Division, TAT  
 Tel. +66 2250 5500 ext. 3485-9  
[www.tourismthailand.org](http://www.tourismthailand.org)



## Thailand New Year Countdown Celebration

**Date** : 31 December 2015-1 January 2016  
**Venue** : Throughout Thailand

**Countdown @ Central World Festival, Bangkok**-There are many activities such as various performances from many famous artists in Thailand. There are light decorations throughout Ratchaprasong and Pathumwan intersection.

**New Year Festival in Pattaya, Chonburi Province**-Many activities such as performances on the stage by celebrities and artists. Besides, there is a New Year parade and bazaar where local goods and foods can be found.

**Hat Yai Night Paradise Countdown, Songkhla Province**-There are many shows on the stage from various artists and celebrities including countdown party to the next year and parade around the city. Also, the local goods and food are offered to the tourists.

**Khon Kaen Countdown, Khon Kaen Province**-There are New Year celebration activities nearby Khon Kaen City Gate where the area will be decorated with lights and colorful decorations. There are many performances from famous artists throughout the night.

**Contact** Event Planning Division, TAT  
 Tel. +66 2250 5500 ext. 3470-2  
[www.tourismthailand.org](http://www.tourismthailand.org)



Sport





### Pattaya Women's Open

**Date** : 8–15 February 2015  
**Venue** : Dusit Thani Hotel, Pattaya, Chonburi Province

The 2015 PTT Pattaya Open, will continue the tradition of being staged at the Dusit Thani Hotel in Pattaya. It is now in its 24th year, and is one of the longest running events on the WTA tennis tour calendar. The WTA tour is the global leader in women's professional sport with more than 2,500 players representing 92 nations competing for more than \$118, 000,000 in prize money at the WTA's 54 events and 4 Grand Slams where many participants are world's famous players.

**Contact** Pentangle Promotions Co., Ltd.  
 Tel. +66 2311 3414-5, +66 2311 3497  
 www.tourismthailand .org



### Honda LPGA Thailand 2015

**Date** : 26 February–1 March 2015  
**Venue** : Siam Country Club Pattaya Old Course, Pattaya, Chonburi Province

Women's Golf Honda LPGA Thailand 2015 is a tournament features the top 60 LPGA's money list and 10 exemptions competing in the 72-hole stroke play with no cut to win the prize purse of 1.5 million USD. Besides, The Honda LPGA THAILAND 2015 have committed to supporting and offering opportunities to Thai junior golfers. A golf clinic will be held during the tournament featuring top players to give out some techniques and advices to junior golfers. The Honda LPGA THAILAND 2015 has also offered opportunities for Thai golfers to compete with world-class professional golfers in order to inspire the new-generation. These opportunities also provide a platform for those young Thais to reach a world-class level

**Contact** TAT Chonburi Office  
 Tel. +66 3842 7667, +66 3842 8750  
 www.lpgathailand.com





### Top of the Gulf Regatta International

**Date** : 30 April–4 May 2015  
**Venue** : Ocean Marina Yacht Club, Jomtien Beach, Chonburi Province

The annual Top of the Gulf Regatta takes place at Ocean Marina Yacht Club, Jomtien Beach, which has grown to become the largest by boat number and become the center of boat racing in Asia. Besides, this event helps to promote the tourism of Pattaya. Top of the Gulf Regatta is an international boat racing which has the international standard from International Sailing Federation or ISAF. This competition also attracts various participants from various countries that sail Keel Boat and Multihulls, beach catamarans, dinghies, and Optimists.

**Contact** TAT Chonburi Office  
 Tel. +66 3842 7667, +66 3842 8750  
[www.topofthegulfregatta.com](http://www.topofthegulfregatta.com)



### Thailand Bike Fest

**Date** : October 2015  
**Venue** : Phuket Province

The Tour de Thailand is a series of various fully supported bicycle tours throughout Thailand. There are many rides for riders to choose throughout the Andaman Peninsula, the Pearl of Asia. These rides are life-changing rides—not races—through Thailand's rich and diverse culture with breathtaking scenery, compassionate riders and caring support staff.

**Contact** Event Department, TAT  
 Tel. +66 2250 5500 Ext 3485–9  
[www.tourismthailand.org](http://www.tourismthailand.org)



### Laguna Phuket Triathlon

**Date** : November 2015  
**Venue** : Laguna Beach Resort, Phuket Province

The Laguna Phuket Triathlon is Asia's premier destination triathlon featuring a unique 1.8 km. swim, 55 km. bike and 12 km. run through spectacular tropical scenery. The event features both Individual Triathlon and Team relay Triathlon where over the past twenty years, the race has attracted thousands of age group athletes as well as triathlon legends.

**Contact** TAT Phuket Office  
 Tel. +66 7621 2231  
[www.challengelagunaphuket.com](http://www.challengelagunaphuket.com)



### Jet Ski King's Cup–World Cup Grand Prix

**Date** : December 2015  
**Venue** : Jomtien Beach, Pattaya, Chonburi Province

The annual Jet Ski King's Cup is considered to be one of the most important competitions on the professional jet-ski calendar. This event has been receiving great interests from many top professional riders over the world. There will be a competition in several categories such as Stand-up ski, Jet Ski Parasailing, Sport, Standard, and many more. The Jet Ski King's Cup–World Cup Grand Prix is one of the biggest competitions which also attract many tourists and local people as well.

**Contact** TAT Chonburi Office  
 Tel. +66 3842 7667, +66 3842 8750  
[www.tourismthailand.org](http://www.tourismthailand.org)



# Marathon



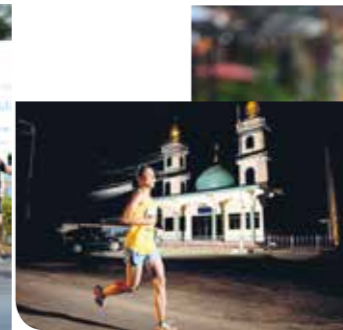
### The 12<sup>th</sup> Khon Kaen International Marathon

**Date** : 25 January 2015

**Venue** : Khon Kaen University, Khon Kaen Province

Khon Kaen International Marathon is one of the greatest annually sport events in Khon Kaen Province which aims to create good relationship among Khon Kaen people. The event is well cooperated by government sectors, private sectors and local Khon Kaen people. This marathon has developed to international standards in the area of the running route, management and in offering different services where its goals are to promote and disseminate knowledge on health science and sports and to promote good health. The race is divided into 4 running divisions : 1. Marathon (42.195 km.) 2. Half-Marathon (21.10 km.) 3. Mini Marathon (11.55 km.) 4. Walk and Fun Run (4.5 km.)

**Contact** Khon Kaen University Alumni Association  
Tel: +66 4320 2388-9, +66 4320 2750  
[www.khonkaenmarathon.com](http://www.khonkaenmarathon.com)



### The 10<sup>th</sup> Laguna Phuket International Marathon

**Date** : 7 June 2015

**Venue** : Laguna-Phuket Hotel, Phuket Province

Laguna Phuket International Marathon is one of the biggest marathon events in Phuket Province where there would be more than 6,000 participants from over 50 countries. The race is divided into 5 running division and all routes will lead the participants to various sight-seeing places of Phuket Province, including beautiful beaches.

**Contact** TAT Phuket Office Tel. +66 3451 1200  
[www.phuketmarathon.com](http://www.phuketmarathon.com)





### The 24<sup>th</sup> Pattaya Marathon

**Date** : 19 July 2015  
**Venue** : Pattaya, Chonburi Province

The Annually Pattaya Marathon 2015 will be held in the Pattaya area, which is also known as the King's Cup marathon. This event will be held along the road next to the Pattaya beach. This annual event is a large scale marathon and half-marathon running that attracts athletes from all over the world to participate. There are 4 categories of the marathon: 1. 42.195 km-Marathon. 2. 21.100 km.-Half Marathon. 3. 10.550 km.-Quarter Marathon. 4. 5 km.-Students Run.

**Contact** Pattaya City Hall Tel. +66 38 253 127  
[www.pattaya-marathon.net](http://www.pattaya-marathon.net)



### The 18<sup>th</sup> Amari Watergate & BMW Thailand Charity Midnight Run

**Date** : 17 October 2015  
**Venue** : Amari Watergate, Bangkok

The only race in Bangkok to take place on the capital's streets at midnight, the Midnight Run sees over 7,000 runners competing in this annual event. With a choice of 6 or 12 kilometer routes, the run brings a fantastic mix of international and local professional runners together with families and groups of friends to support a variety of amazing courses.

**Contact** Clark Hatch Fitness Centre of the Amari Watergate Bangkok  
 Tel. +66 2653 9000 ext. 5780-2  
 The hotel's Public Relations Department  
 Tel. +66 2653 9000 ext. 5021  
[www.amari.com/watergate/charity-midnight-run.aspx](http://www.amari.com/watergate/charity-midnight-run.aspx)



### The 28<sup>th</sup> Standard Chartered Bangkok Marathon

**Date** : 15 November 2015  
**Venue** : Sanam Chai Road located at the east side of the Grand Palace, Bangkok

Standard Chartered Bangkok Marathon has been the biggest marathon in Thailand since 1988. The event is set on the third week of November on Sunday every year. The full marathon and all other divisions start and finish at Sanam Chai Road, in front of The Royal Grand Palace (The Emerald Buddha Temple/Wat Phrakaew). The road surrounding that area will be temporary closed on the event date as well. Additionally, Bangkok Marathon 2015 also travels past many historical landmarks and through cultural and ethnic communities. There are 5 categories of this marathon: 1. Marathon, 42.195 km. 2. Half Marathon, 21.0 km. 3. Mini Marathon, 10.0 km. 4. Micro Marathon, 4.5 km. 5. Fun Walk, 1.5 km.

**Contact** National Jogging Association of Thailand  
 Tel. +66 2 628 8361, +66 2 280 7667-8  
[www.bkkmarathon.com](http://www.bkkmarathon.com)



### The 10<sup>th</sup> Chiang Mai Marathon

**Date** : 20 December 2015  
**Venue** : Muang District, Chiang Mai Province

Chiang Mai Marathon 2015 is the 10th edition of this popular running event in northern Thailand. This Chiang Mai Marathon has its unique identity where along the race course will be full of natural spots, historical sites, allowing the participants to see the traditional arts and culture, local customs and festivals of local people. There are 6 categories of this marathon: 1. Marathon, 42.195 km. 2. New Marathon runners 42.195 km. 3. Half Marathon, 21.10 km. 4. Mini Marathon, 10.0 km. 5. Walk & Fun Run, 3.0 km. 6. Fun Walk, 3.0 km.

**Contact** Jogging and Enjoy Sports of Thailand  
 Tel. +66 2741 1227-8  
 E-mail : [bkk@ChiangMaiMarathon.com](mailto:bkk@ChiangMaiMarathon.com)

# TAT'S OVERSEAS OFFICES

## EUROPE

### LONDON

Tourism Authority of Thailand 1<sup>st</sup> Floor, 17-19 Cockspur Street, Trafalgar Square, London SW1Y 5 BL UNITED KINGDOM

**Areas of Responsibility :** United Kingdom, Ireland, Republic of South Africa, Federal Democratic Republic of Ethiopia, Federal Republic of Nigeria and Republic of Kenya

Tel : (44 207) 925 2511 Fax : (44 207) 925 2512

E-mail : info@tourismthailand.co.uk, tatuk@tat.or.th

Website : www.tourismthailand.org

### FRANKFURT

Thailandisches Fremdenverkehrsamt Bethmann Str.58, D-60311 Frankfurt/M., GERMANY

**Areas of Responsibility :** Germany, Austria, Slovenia, Croatia, Switzerland, Liechtenstein, Romania, Yugoslavia, Bulgaria, Moldova, Macedonia, Albania, Czech Republic, Slovakia, Poland, Hungary, Bosnia-Herzegovina

Tel : (49 69) 138 139 0 Fax : (49 69)138 139 50

E-mail : info@thailandtourismus.de

Website : www.thailandtourismus.de

### PARIS

Office National du Tourisme de Thaïlande 90, Avenue des Champs-Élysées, 75008 Paris, FRANCE

**Areas of Responsibility :** France, Belgium, Luxembourg, The Netherlands, Morocco, Monaco, Tunisia and Algeria

Tel : (33 1) 5353 4700 Fax : (33 1) 4563 7888

E-mail : tatpar@wanadoo.fr, tatpar@tat.or.th

### ROME

Ente Nazionale per il Turismo Thailandese Via Barberini 68, 4th Fl., 00187 Roma, ITALY

**Areas of Responsibility :** Italy, Spain, Greece, Portugal, Israel, Egypt, Turkey and Cyprus

Tel : (39 06) 420 14422, 420 14426 Fax : (39 06) 487 3500

E-mail : tat.rome@iol.it, tatrome@tat.or.th

### STOCKHOLM

Tourism Authority of Thailand Drottninggatan 33 GF, 111 51 Stockholm, SWEDEN

**Areas of Responsibility :** Sweden, Norway, Denmark, Finland, Iceland, Estonia, Latvia and Lithuania

Tel : (46 8) 700 56 91 Fax : (46 8) 700 56 99

E-mail : info@tourismthailand.se, tatsth@tat.or.th

Website : www.tourismthailand.se

### MOSCOW

Tourism Authority of Thailand , Moscow Office Russia , 101000 , Moscow , Bolshoy Spasoglineshevsky Pereulok, 9/1, Building 16, Office IV, RUSSIA

**Areas of Responsibility :** Russia, Belarus, Ukraine, Georgia, Armenia, Azerbaijan, Kazakhstan, Uzbekistan, Turkmenistan, Tajikistan and Kyrgyz

Tel : 7 (495) 623 2505 Fax : 7 (495) 623 2773

E-mail : tatmoscow@tat.or.th, info@tourismthailand.ru

Website : www.tourismthailand.ru

## ASIA

### KUALA LUMPUR

Tourism Authority of Thailand Suite 22.01, Level 22nd Floor, Menara Citibank, 165 Jalan Ampang, 50450 Kuala Lumpur, MALAYSIA

**Areas of Responsibility :** Malaysia, Brunei Darussalam

Tele. (603) 216 23480 Fax. (603) 216 23486

E-mail : info@tourismthailand.my

Website : www.tourismthailand.my

### SINGAPORE

Tourism Authority of Thailand C/o Royal Thai Embassy 370 Orchard Rd., SINGAPORE 238870

**Areas of Responsibility :** Singapore, The Philippines

Tel : (656) 235 7901 Fax : (656) 733 5653

E-mail : tatsin@singnet.com.sg, tatsin@tat.or.th

### JAKARTA

Tourism Authority of Thailand The PLAZA, 38th Floor, Zone B, JL. M.H. Thamrin Kav. 28-30 Jakarta 10350 INDONESIA

**Areas of Responsibility :** Indonesia

Tel : (62) 21 2992 2353 Fax : (62) 21 2992 8355

E-mail : tatjak@tat.or.th

Website : id.tourismthailand.org

### HONG KONG

Tourism Authority of Thailand Room 2101 21/F Prosperity Tower, 39 Queen's Road, Central, HONG KONG

**Areas of Responsibility :** Hong Kong, Macau

Tel : (852) 2868 0732, 2868 0854 Fax : (852) 2868 0428

E-mail : tathkg@pacific.net.hk, tathkg@tat.or.th

Website : www.amazingthailand.org.hk

### BEIJING

Tourism Authority of Thailand Room 902, Office Tower E1, Oriental Plaza, No.1 East Chang An Avenue, Dong Cheng District, Beijing, 100738. CHINA

**Areas of Responsibility :** People's Republic of China (except Hongkong SAR, Macau SAR and Taiwan) & Mongolia

Tel : (86 10) 8518 3526-29 Fax : (86 10) 8518 3530

E-mail : tatbjs@tat.or.th, tatbjs@sohu.com

Website : www.tatbjs.org.cn

### CHENGDU

Tourism Authority of Thailand Room no. 1404, Yanlord Landmark office Tower, 1 Renmin South Road Section 2, Chengdu 610016, Sichuan, P.R. China

**Areas of Responsibilities :** Xinjiang Uygur Autonomous Region, Qinghai, Ningxia Hui Autonomous Region, Gansu, Shaanxi, Chongqing, Sichuan and Tibet Autonomous Region

Tel : (86 28) 6465 6299 Fax : (86 28) 6465 6399

E-mail : tatchengdu@tat.or.th

Website : cn.tourismthailand.org

### TAIPEI

Thailand Tourism Division 13 Floor, Boss Tower, No 111 SungChiang Rd. (Near Nanking East Road Junction) TAIPEI 104

**Areas of Responsibility :** Taiwan

Tel : (886 2) 2502 1600 Fax : (886 2) 2502 1603

E-mail : tattpe@ms3.hinet.net, tattpe@tat.or.th

Website : www.tattpe.org.tw

### TOKYO

Tourism Authority of Thailand Yurakucho Denki Building, South Tower 2nd Fl., Room 259, 1-7-1 Yurakucho Chiyoda-ku, Tokyo 100-0006, JAPAN

**Areas of Responsibility :** Northern Area of Honshu Island : Tohoku, Kanto and Hokkaido Island

Tel : (81 3) 3218 1077 Fax : (81 3) 3218 0655

E-mail : tattky@tattky.com, tattky@tat.or.th

Website : www.thailandtravel.or.jp

### OSAKA

Tourism Authority of Thailand Technoble Yotsubashi Bldg., 3FL. 1-6-8 Kitahorie, Nishi-ku Osaka 550-0014 JAPAN

**Areas of Responsibility :** Southern Area of Honshu Island:Kinki, Chugoku and Chabu

Tel : (81 6) 6543 6654,6543 6655 Fax : (81 6) 6543 6660

E-mail : info@tatoso.com, tatoso@tat.or.th

Website : www.thailandtravel.or.jp

### FUKUOKA

Tourism Authority of Thailand EL Gala Bldg. 6th Fl., 1-4-2, Tenjin, Chuo-ku Fukuoka, 810-0001 JAPAN

**Areas of Responsibility :** Kyushu Island ,Shikoku Island and Okinawa

Tel : (81 92) 725 8808 Fax : (81 92) 735 4434

E-mail : tatfuk@tatfuk.com, tatfuk@tat.or.th

Website : www.thailandtravel.or.jp

### SEOUL

Tourism Authority of Thailand Coryo Daeyungak Center Building RM. No.1205, 12th Fl., 25-5, 1-Ka, Chungmu-Ro, Chung-Ku, Seoul 100-706, KOREA

**Areas of Responsibility :** Republic of Korea

Tel : (82 2) 779 5416-8, 779 5160, 779 5162-4 Fax : (82 2) 779 5419

E-mail : info@tatsel.or.kr, tatsel@tat.or.th

Website : www.tatsel.or.kr

### NEW DELHI

Tourism Authority of Thailand, B-9/1A (Ground Floor), Vasant Vihar, New Delhi - 110057

**Areas of Responsibility :** Northern and Eastern India, Bangladesh, Nepal, and Bhutan

Tel : (91 11) 4166 3567-9 Fax : (91 11) 4166 3570

E-mail : tatdel@tat.or.th

Website : www.amazingthailand.co.in

**MUMBAI**

Tourism Authority of Thailand No. 45, 4th Floor, Free Press House, Free Press Journal Marg, Nariman Point, Mumbai – 400 021 India

**Areas of Responsibility** : Western and Southern India, Sri Lanka and Maldives

Tel : (91 22) 2204 2727, 2204 2728 Fax : (91 22) 2204 2729

E-mail : tatmumbai@tat.or.th

Website : www.amazingthailand.co.in

**HO CHI MINH**

The Empire Tower 5th floor, 26 - 28 Ham Nghi , District 1, Ho Chi Minh City, VIETNAM

**Areas of Responsibility** : Vietnam, Lao PDR and Cambodia

Tel : (84 8) 291 3885, (84 8) 291 3886 Fax : (84 8) 291 3887

E-mail : tathcm@tat.or.th

Website : www.tourismthailand.org.vn

**DUBAI**

Tourism Authority of Thailand, 133 Sheikh Zayed Road, Apartment No. 1804 Dusit Thani Hotel, P.O.Box 450019, Dubai, UAE

**Areas of Responsibility** : Bahrain, Iraq, Jordan, Kuwait, Lebanon, Oman, Qatar, Saudi Arabia, Syria and the Middle East, Yemen, U.A.E.

Tel : (97 1) 4325 0184-5 Fax : (97 1) 4325 0187

Email: tatdubai@tat.or.th

Website : www.tourismthailand-middleeast.org

**SHANGHAI**

Tourism Authority of Thailand 333rd floor, LCH Centre Building 288 Nanjing Road (West), Huang Pu District, Shanghai Municipality, 2000003 CHINA

**Areas of Responsibility** : China

Tel : (86 21) 33 66 3409 Fax : (86 21) 33 66 3408

**GUANGZHOU**

Tourism Authority of Thailand Room 1252-1254, The Garden Tower, The Garden Hotel, 368 Huanshi Dong Road, Yuexiu District, Guangzhou, P.R.China

**Areas of Responsibilities** : Jiangxi, Fujian, Guangdong, Hainan and Hunan Tel : (86) 20 8333 8999 ext. 1252-1254

Fax : (86) 20 8365 1836, (86) 20 8382 1061

E-mail : tatguangzhou@tat.or.th

**KUNMING**

Tourism Authority of Thailand Room 1301, Brilliant Plaza No. 6 Sanshi Street, Kunming, Yunnan PR, China 650011

**Areas of Responsibility** : Chogqing, Yunnan, Sichuan, Guizhou, Guangxi Zhuang Autonomous Region and Tibet Autonomous Region

Tel : (86 87) 1317 8840 Fax : (86 87) 13171664

**NORTH AMERICA****NEW YORK**

Tourism Authority of Thailand 61 Broadway, Suite 2810 New York, N.Y. 10006, U.S.A.

**Areas of Responsibility** : Alabama, Arkansas, Connecticut, Delaware, Florida, Georgia, Illinois, Indiana, Iowa, Kentucky, Louisiana, Maine, Maryland, Massachusetts, Michigan, Minnesota, Mississippi, Missouri, New York, New Hampshire, New Jersey, North Carolina, Tennessee, Vermont, Virgia, Washington D.C., WestVirginia, Wisconsin, Puerto Rico and the Bahamas and Canada Countries (West Canada: Alberta, British Columbia, Manitoba, Northwest Territories, Saskatchewan and Yukon East Canada: Ontario, Quebec, New Brunswick, Nova Scotia and New Foundland)

Tel : (1 212) 432 0433 Fax : (1 212) 269 2588

E-mail : info@tatny.com, tatny@tat.or.th

**LOS ANGELES**

Tourism Authority of Thailand 611 North Larchmont Boulevard, 1st Floor, Los Angeles, CA 90004 ,U.S.A.

**Areas of Responsibility** : Alaska,Arizona, California, Colorado, Hawaii, Idaho, Kansas, Montana, Nebraska, Nevada, New Mexico, North Dakota, Oklahoma, Oregon, South Dakota, Texas, Utah, Washington, Wyoming, Guam Island and all Central and Southern American Countries

Tel : (1 323) 461 9814 Fax : (1 323) 461 9834

E-mail : tatla@ix.netcom.com, tatla@tat.or.th

**AUSTRALIA****SYDNEY**

Tourism Authority of Thailand 2002, Level 20, 56 Pitt Street, Sydney, NSW 2000 AUSTRALIA

**Areas of Responsibility** : Australia, New Zealand and South Pacific

Tel : (61 2) 9247 7549 Fax : (61 2) 9251 2465

E-mail : info@thailand.net.au, tatsyd@tat.or.th

Website : www.thailand.net.au